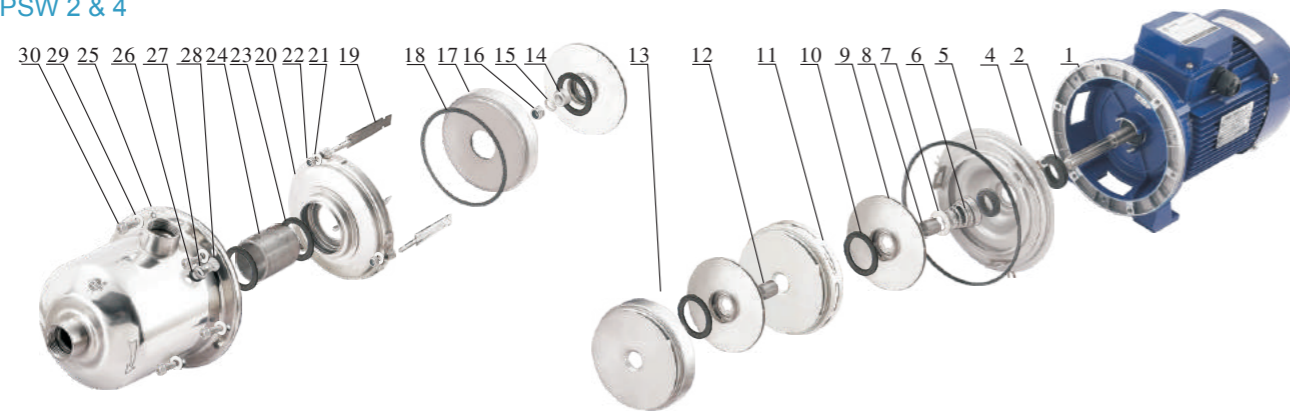


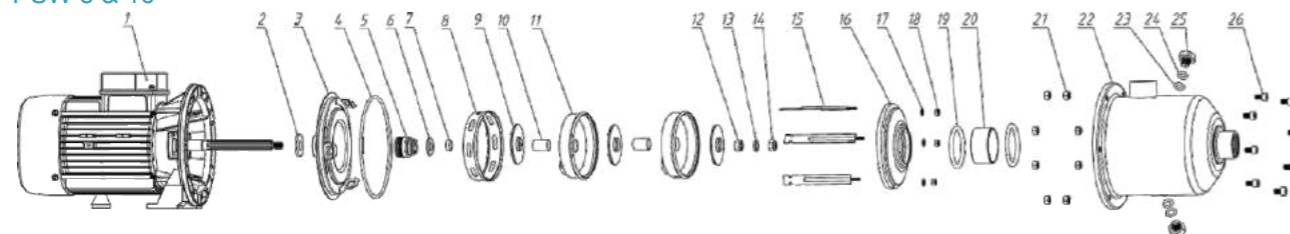
Exploded View

PSW 2 & 4



No.	Part Name	No.	Part Name	No.	Part Name	No.	Part Name	No.	Part Name
1	Motor	8	Shaft sleeve IV	14	Shaft sleeve I	20	Front Cover	26	O ring
2	"V"Slinger	9	Impeller	15	Spring washer	21	Gasket	27	"L"Washer
4	Back cover	10	Neck ring	16	Impeller nut	22	Nut	28	Priming/Drain Bolt
5	O ring	11	Diffuser assembly IV	17	Diffuser assembly I	23	O ring	29	Plain Washer
6	Mechanical seal	12	Shaft sleeve III	18	Gasket	24	Inner Tube	30	Bolt
7	Mech. Seal plate	13	Diffuser assembly III	19	Tension bar	25	Casing		

PSW 8 & 16



No.	Part Name	No.	Part Name	No.	Part Name	No.	Part Name	No.	Part Name
1	Motor	7	Shaft sleeve II	13	Spring washer	19	O ring	25	Priming/Drain Bolt
2	"V"Slinger	8	Diffuser assembly III	14	Impeller nut	20	Inner tube	26	Bolt
3	Back cover	9	Impeller	15	Tension bar	21	Nut		
4	O ring	10	Shaft sleeve IV	16	Front cover	22	Casing		
5	Mechanical seal	11	Diffuser assembly II	17	Gasket	23	O ring		
6	Mech. Seal plate	12	Shaft sleeve I	18	Nut	24	"L"Washer		

potenza[®]
feel the power

WATER PUMP

PSW SERIES





Horizontal Multistage Stainless Steel water pump



INTRODUCTION

- Premium stainless steel multistage horizontal pump. Compact, powerful & quiet operation. Using SUS304 stainless steel for hydraulic parts.
- Registered with SPAN complying to ISO 9906:2012 Grade 2B and certified by SIRIM.

Application

- Pumping of clean non-loaded fluids; pressurizing system; drinking and glycol water; water treatment; heating and air conditioning; washing system.

Materials :

- Mechanical Seal : NBR/Carbon/Ceramic (Viton Type Upon Request)
- Impeller : SUS 304
- Shaft : SUS 304
- Pump Casing : SUS 304
- Bracket and Motor Casing material : Aluminium
- Bearing : Made in Japan NSK Ball Bearing

Technical Data:

- Maximum working pressure: 8 bar.
- Liquid temperature: -15°C~+80°C (Standard mechanical seal).
- Optional Viton seal (-20°C~+110°C). With PC controller: +60°C.

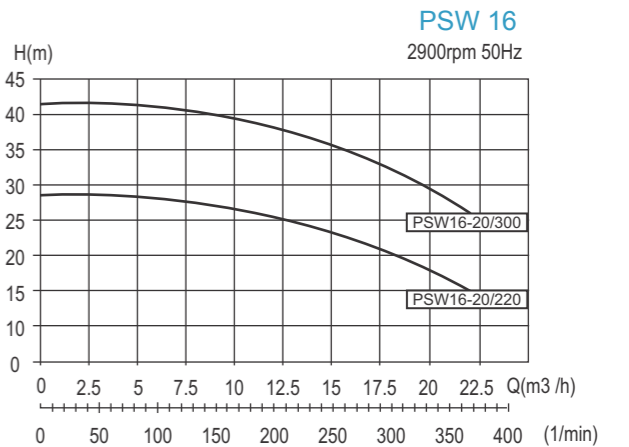
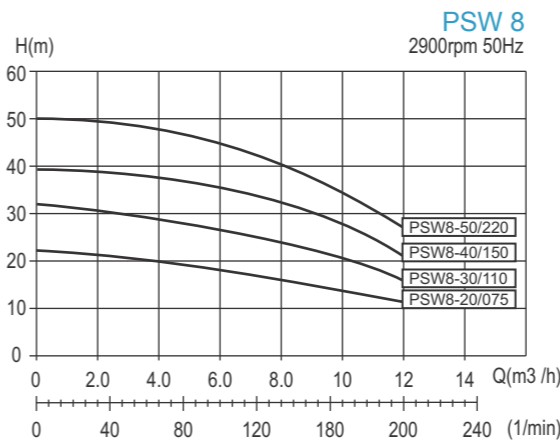
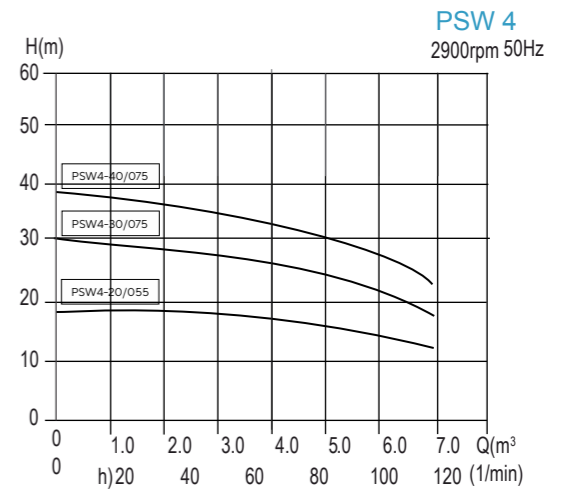
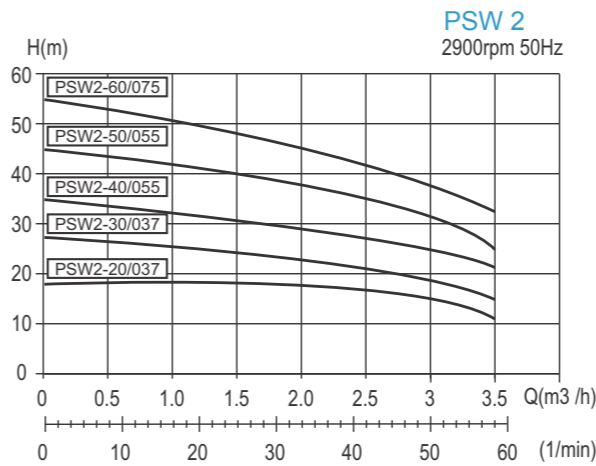
Motor :

- 2 Pole Induction motor, Continuous duty,
- TEFC, Class F, IP55.
- Single phase: 240V/1ph/50Hz (with thermal protection).
- Three phase: 415V/3ph/50Hz.
- Ambient temperature: -15°C~+40°C.

Additional :

- Quiet Operation
- Energy Saving (IE2 motor)
- NSK Ball Bearing (Made in Japan)
- Large Water Capacity
- Pump material SUS304 (Anti-rust)

Performance Curve



Performance Data

PSW 2

Model		Power		Suction Head		Capacity 2900rpm								
Single Phase 240V/50HZ	Three Phase Δ 220V - Y415V/50HZ	KW	HP	m	m	m³/h	l/min	0.5	1.0	1.5	2.0	2.5	3.0	3.5
PSW2-20/037	PSWT2-20/037	0.37	0.5	8.5	8.5	18	11	16	15	14	13	11		
PSW2-30/037	PSWT2-30/037	0.55	0.75	8.5	8.5	26	25	24	22.5	21	19	16		
PSW2-40/055	PSWT2-40/055	0.55	0.75	8.5	8.5	35	32.5	31	29.5	27.5	25.5	21		
PSW2-50/055	PSWT2-50/055	0.55	0.75	8.5	8.5	44	41	39	36.5	34	31	26		
PSW2-60/075	PSWT2-60/075	0.75	1.0	8.5	8.5	53	50	47	44	40	36	30		

PSW 4

Model		Power		Suction Head		Capacity 2900rpm						
Single Phase 240V 50HZ	Three Phase 415V 50HZ	KW	HP	m	m	1	2	3	4	5	6	7
PSW4-20/055	PSWT4-20/055	0.55	0.75	8.0	8.0	16.7	33.3	50	66.7	83.3	100	116.7
PSW4-30/075	PSWT4-30/075	0.75	1.0	8.0	8.0	18	17	16.5	15.5	14.5	13	11
PSW4-40/075	PSWT4-40/075	0.75	1.0	8.0	8.0	27	26	25	24	22.5	20	17.5

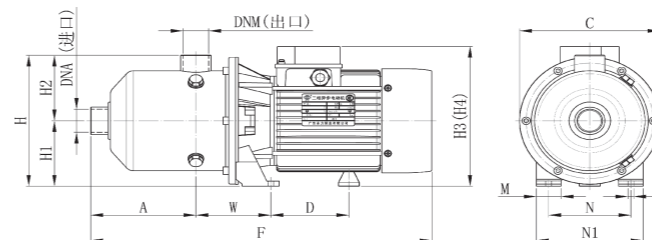
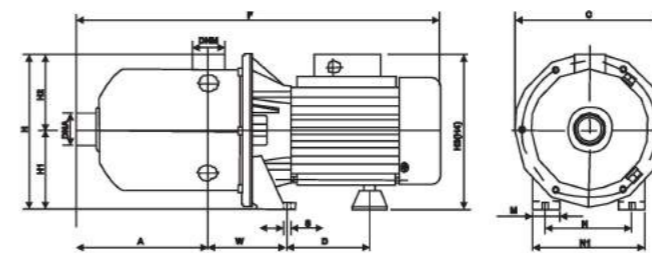
PSW 8

Model		Power		Suction Head		Capacity 2900rpm										
Single Phase 240V 50HZ	Three Phase 415V 50HZ	KW	HP	m	m	5	6	7	8	9	10	11	12			
PSW8-20/075	PSWT8-20/075	0.75	1.0	20	20	19.5	18.5	18	17.5	16.5	15.5	14				
PSW8-30/110	PSWT8-30/110	1.1	1.5	29.5	29.5	29	28	27	26	24.5	23	21				
PSW8-40/150	PSWT8-40/150	1.5	2.0	39	39	38	37	36	35	33	31	29				
PSW8-50/220	PSWT8-50/220	2.2	3.0	49	49	48	46.5	45	43.5	41	39	36				

PSW 16

Model		Power		Suction Head		Capacity 2900rpm										
Single Phase 240V 50HZ	Three Phase 415V 50HZ	KW	HP	m	m	8	10	12	14	16	18	20	22			
PSW16-20/220	PSWT16-20/220	2.2	3.0	27.5	27.5	26.5	25.5	24	23	20.5	18	15				
	PSWT16-30/300	3.0	4.0	40.5	40.5	39.5	38.5	37	35	32.5	29.5	26				

Outline Dimension



PSW 2 & 4

Model	Dimensions(mm)															
	A	C	F	H	H1	H2	*H3	*H4	M	N	N1	S	W	D	DNA	DNM
PSW2-20/037	76	170	400	176	88	88	180	180	30	100	130	7	91	92	G1"	G1"
PSW2-30/037	76	170	400	176	88	88	180	180	30	100	130	7	91	92	G1"	G1"
PSW2-40/055	130	170	454	176	88	88	180	180	30	100	130	7	91	92	G1"	G1"
PSW2-50/055	130	170	454	176	88	88	180	180	30	100	130	7	91	92	G1"	G1"
PSW2-60/055	130	170	454	176	88	88	180	180	30	100	130	7	91	92	G1"	G1"
PSW4-20/055	76	170	400	176	88	88	180	180	30	100	130	7	91	92	G1 1/4"	G1"
PSW4-30/075	130	170	454	176	88	88	180	180	30	100	130	7	91	92	G1 1/4"	G1"
PSW4-40/075	130	170	454	176	88	88	180	180	30	100	130	7	91	92	G1 1/4"	G1"

*H2 for motors on single phase
*H3 for motors on three phase

PSW 8 & 16

Model	Dimensions(mm)																
	A	C	F	H	H1	H2	*H3	*H4	M	N	N1	s	w	D	DNA	DNM	WEIGHT
PSW8-20/075	118	222	475	245	120	125	260	230	39	140	180	9	112	95	G1 1/2"	G1 1/2"	14.8
PSW8-30/110	118	222	475	245	120	125	260	230	39	140	180	9	112	95	G1 1/2"	G1 1/2"	17.6
PSW8-40/150	178	222	535	245	120	125	260	230	39	140	180	9	112	95	G1 1/2"	G1 1/2"	22
PSW8-50/220	178	222	550	245	120	125	268	240	39	140	180	9	112	95	G1 1/2"	G1 1/2"	24.5
PSW16-20/220	126	222	490	250	120	130	268	240	39	140	180	9	112	95	G1 1/2"	G2"	20
PSW16-20/220	178	222	550	250	120	130	-	240	39	140	180	9	112	95	G1 1/2"	G2"	25

*H2 for motors on single phase
*H3 for motors on three phase